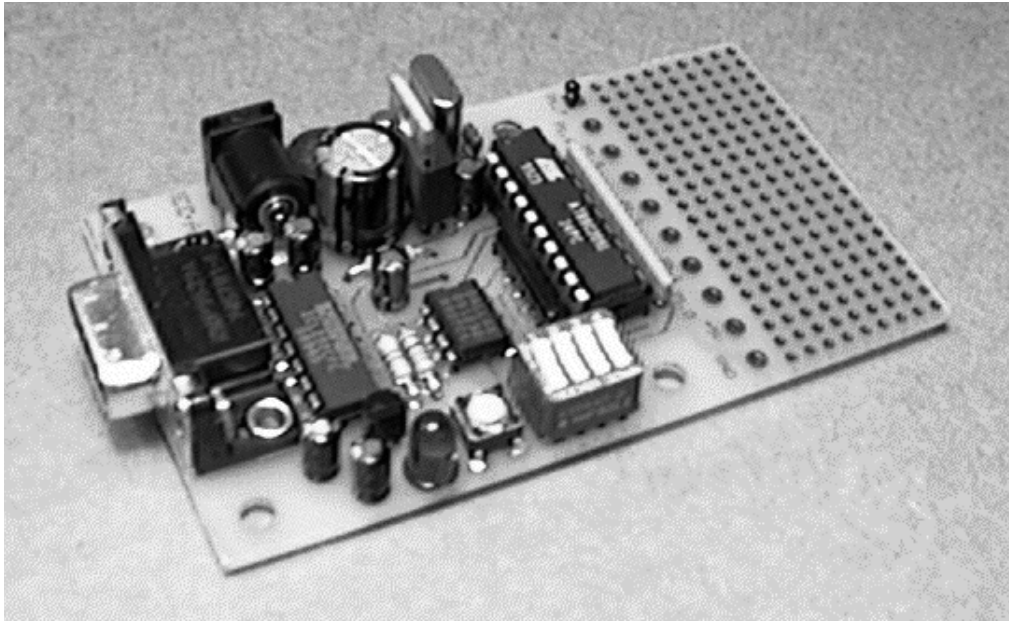


SBC-2051

AT89C2051 SINGLE BOARD COMPUTER



The SBC-2051 is a single board computer based on the Atmel 89C2051 flash memory microcontroller. The SBC-2051 and PRG-2051 together form a low-cost development system for 89C2051 applications. The 89C2051 consists of an entire 80C51 core including UART, 15 I/O pins, 128 bytes of RAM, and 2Kbytes of flash memory for program storage. The SBC-2051 accepts 8 to 12VAC power via a 2mm power supply connector or a 2 position terminal strip. DIP switches, a pushbutton, LED, and DS1232 watchdog timer make the SBC-2051 a complete embedded controller. A 2 inch by 1 inch prototyping area is provided for expansion. Port 1 of the 89C2051 is routed to pads on 0.2 inch centers allowing for installation of a standard 10 position terminal strip or direct wiring to the prototyping area. The SBC-2051 has four mounting holes with adequate clearance to use standard metal 1/4 inch diameter standoffs.

SBC-2051 FEATURES

- Based on the Atmel AT89C2051PC flash microcontroller
- RS-232 port with DB-9S connector
- 8 to 12VAC input power
- DS1232 Dallas Semiconductor watchdog timer/reset circuit
- 4-position DIP switch
- Pushbutton
- LED with transistor driver
- 4 mounting holes
- 2 x 1 inch prototyping area



Electronic Design Associates
P.O. Box 680344, Franklin, TN 37068
Email: EDA@telalink.net Web: www.telalink.net/~EDA