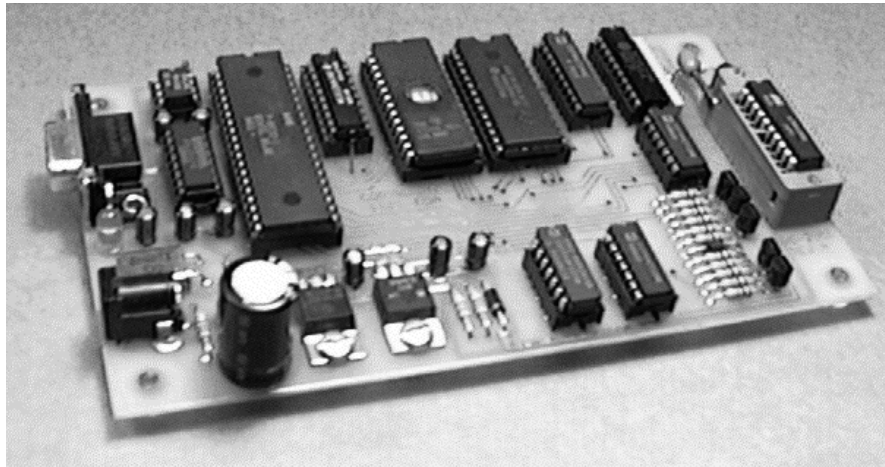


PRG-2051

DEVICE PROGRAMMER



- **Support for Atmel 89C1051 and 89C2051 flash microcontrollers**
- **High quality gold-plated 20-pin DIP ZIF socket**
- **Accepts 12VAC input power via standard 2mm connector**
- **Operating System Independent - uses your terminal emulator**
- **Fast file transfer at 19.2K baud**
- **Accepts industry standard Intel Hex files**

The PRG-2051 is a full featured device programmer for the Atmel 89C1051 and 89C2051 flash memory microcontrollers. The PRG-2051 supports all features of the 89CX051 series. The single-board, no-enclosure design familiar to users of microprocessor evaluation modules (EVM) keeps cost low. The intuitive user interface explains all PRG-2051 functions in a single help screen.

Auto	A	Erase, program, verify, & lock device
Blank	B	Blank check device
Checksum	C	Calculate 16-bit checksum on memory
Dump	D [address]	Dump memory contents
Erase	E	Erase device
Fill	F range data	Fill memory
lock	K	Program device lock bits
Load	L	Load Intel hex file to memory
eNter	N	address list Enter data into memory
Program	P	Erase & Program device
Read	R	Read from device to memory
Signature	S	Display device signature bytes
Type	T [device]	Display or Set device type device = 1 for 89C1051 device = 2 for 89C2051 (default) displays current type if not specified
Verify	V	Verify device against memory

The PRG-2051 connects to your computer through an on-board DB-9 female connector. Setup your favorite terminal emulator, upload an Intel Hex file, and you're ready to program! An on-board ZIF socket supports DIP devices. Computer, serial cable, and terminal emulator software required for operation, not included.



Electronic Design Associates
P.O. Box 680344, Franklin, TN 37068
Email: EDA@telalink.net Web: www.telalink.net/~EDA